

TO: Area Maintenance Engineers Group
Maintenance Superintendents and
Shop Foremen

FROM: Rodney A. Pletan, P.E. *Rodney Pletan*
State Maintenance Engineer

SUBJECT: Securing of Loads

This maintenance bulletin supersedes Maintenance Bulletin No. 90-2 dated July 3, 1990. This new bulletin is necessitated as a result of an erroneous statement that was made due to a misconception of Mn/DOT's exemption status under the law (see second to last paragraph of this bulletin for new language).

During the 1990 Legislative Session a law was enacted which regulates the use of tarps and wheel flaps for all trucks hauling in Minnesota on the public highways. Currently all Mn/DOT trucks are in compliance with provisions of this law except in the area of tarps or covers over dump truck loads.

The portion of the law concerning covered loads is a change to Section 169.81, Sec. 3, Subd. 5b and is attached for your information.

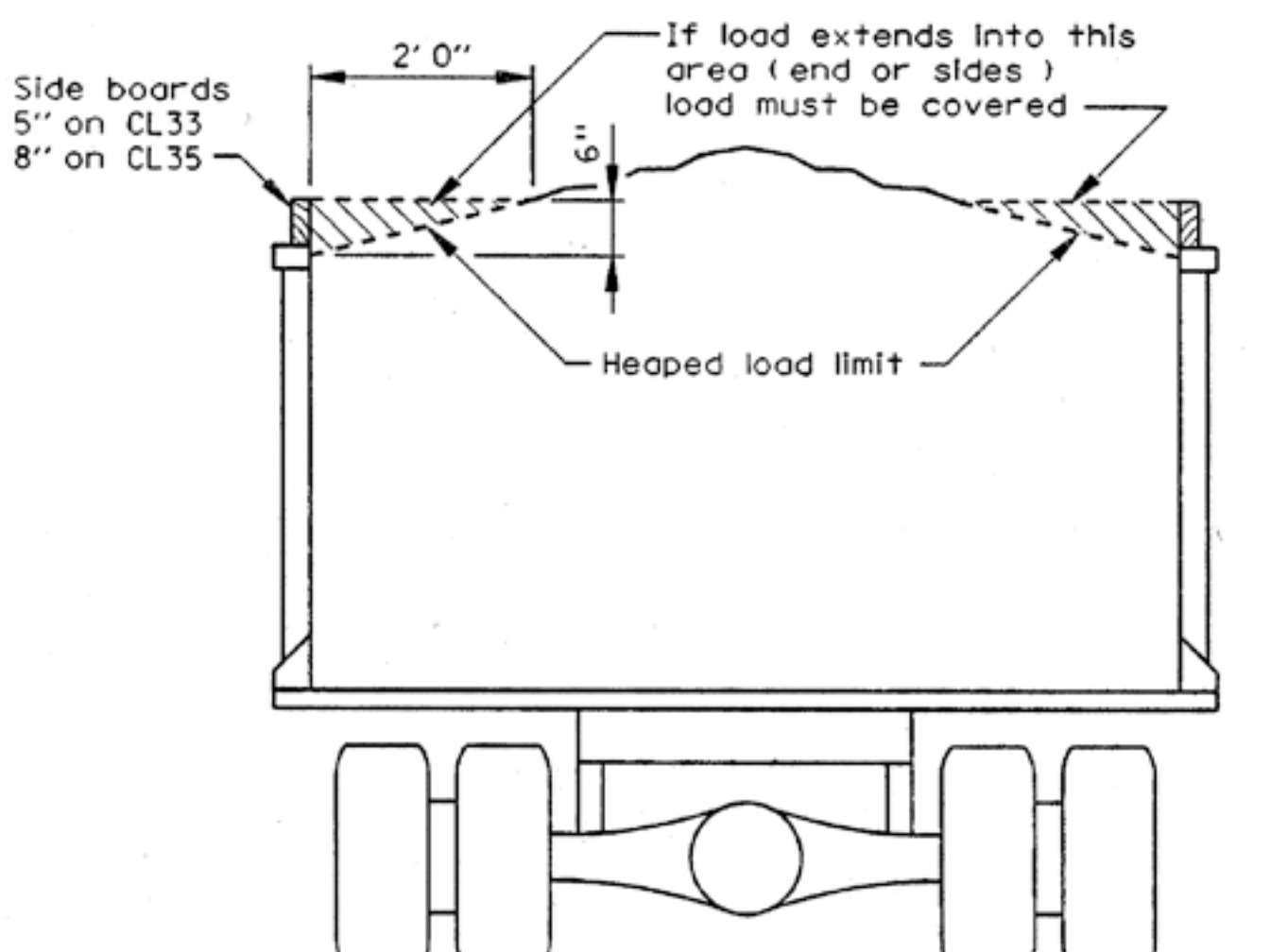
Essentially Section 169.81 now requires us to cover all loads which protrude above a triangle - 6" below the top of sideboards and ends in a distance horizontally 2' from the inside of the top of the exterior wall. The attached diagram indicates the triangular zone which must not have any material in it to avoid tarping or covering. It is the driver's responsibility to ensure that the load is legal. The law also requires that loose sand or gravel be swept or removed from the exterior of the dump body, this is also the driver's responsibility.

Our department must serve as a model to others in both the public and private sectors. Mn/DOT supported this legislation in order to reduce the amount of debris on the roadways in Minnesota. This law should also reduce the number of windshields that are broken as a result of debris falling off trucks.

The provisions of this law do not apply to us during a snow & ice sanding operation, including the period of time that is required to travel to the beginning point on our plow route. Nevertheless we should strive, whenever possible, to keep our sand/salt loads below the above mentioned triangular zone in-keeping with the intent of the law, and to more importantly set the good example. The other obvious side benefit of not allowing the loads to be any larger than absolutely necessary would be in reduced down time caused by spring breakages etc. that occur as a result of overloading.

Please conduct any and all training sessions necessary to ensure that all drivers in your area are familiar with this new law which went into effect August 1, 1990.

LOADING REQUIREMENTS STATUTE 169.81 FOR SAND, GRAVEL OR OTHER LOOSE MATERIAL



ATTACHMENT
Maintenance Bulletin 91-4

169.81 TRAFFIC REGULATIONS

Subd. 5b. Securing loads; exceptions. (a) The driver of a vehicle transporting sand, gravel, aggregate, dirt, lime rock, silica, or similar material shall ensure that the cargo compartment of the vehicle is securely covered if:

(1) the vertical distance from the top of an exterior wall of the cargo compartment to the load, when measured downward along the inside surface of the wall, is less than six inches; or

(2) the horizontal distance from the top of an exterior wall of the cargo compartment to the load is less than two feet.

(b) The driver shall not operate a vehicle to transport sand, gravel, aggregate, dirt, lime rock, silica, or similar material in or on any part of the vehicle other than in the cargo container. The driver shall clean the vehicle of loose sand, gravel, aggregate, dirt, lime rock, silica, or similar material before the vehicle is moved on a road, street, or highway following loading or unloading.

(c) A driver of a vehicle used to transport garbage, rubbish, trash, debris, or similar material is not required to cover the transported material as long as (1) the vehicle is being operated at a speed less than 30 miles per hour, (2) the vehicle is not being operated on an interstate highway, and (3) no part of the load escapes from the vehicle. A driver shall immediately retrieve material that escapes from the vehicle, when safe to do so.